

Eagles on target

Season nears end for Tigers

Anthony Barich

THE Eagles have effectively ended Glenelg's season, extending their winning streak over the gutsy Tigers to 12 at Woodville Oval yesterday.

The Eagles have won their past five encounters at Woodville Oval.

However, only after half-time yesterday did it become obvious that things would remain the same - even with Adelaide's No. 2 ruckman Rhett Biglands a late withdrawal with a calf injury he sustained last Tuesday.

The Tigers put up a mighty fight but ran out of steam late in the third term when the Eagles kicked five unanswered goals while keeping Glenelg scoreless, to set up a 14.17 (101) to 7.9 (51) victory.

The omission of Biglands - who the Crows hoped would return to the Eagles yesterday after a four-week ban for striking Fremantle's Graham Polak - opened the door for midfielder-back pocket John Floreani to play his 100th game.

Former Carlton midfielder Brett Backwell had an intriguing battle with Crows-listed Hayden Skipworth, who has been in blistering form of late.

For the second straight week Eagles' ruckman Paul Lindsay played on a first-gamer - this time Crows' rookie Rowan Andrews.

While Lindsay won the dual, Andrews was good around the ground, supporting his runners well.

With Lindsay rucking well, it enabled Brett O'Hara to form an important link

across half-forward. Glenelg had a chance to be two goals up early but, despite keeping its forward line open, delivered poorly inside its attacking 50m arc.

It was left to Backwell to produce his own magic to goal.

Glenelg vice-captain Paul Sherwood held Mark Passador well while Sudjai Cook - in his 100th game for the club - was prominent on his wing, giving the Tigers back the lead in an even first term.

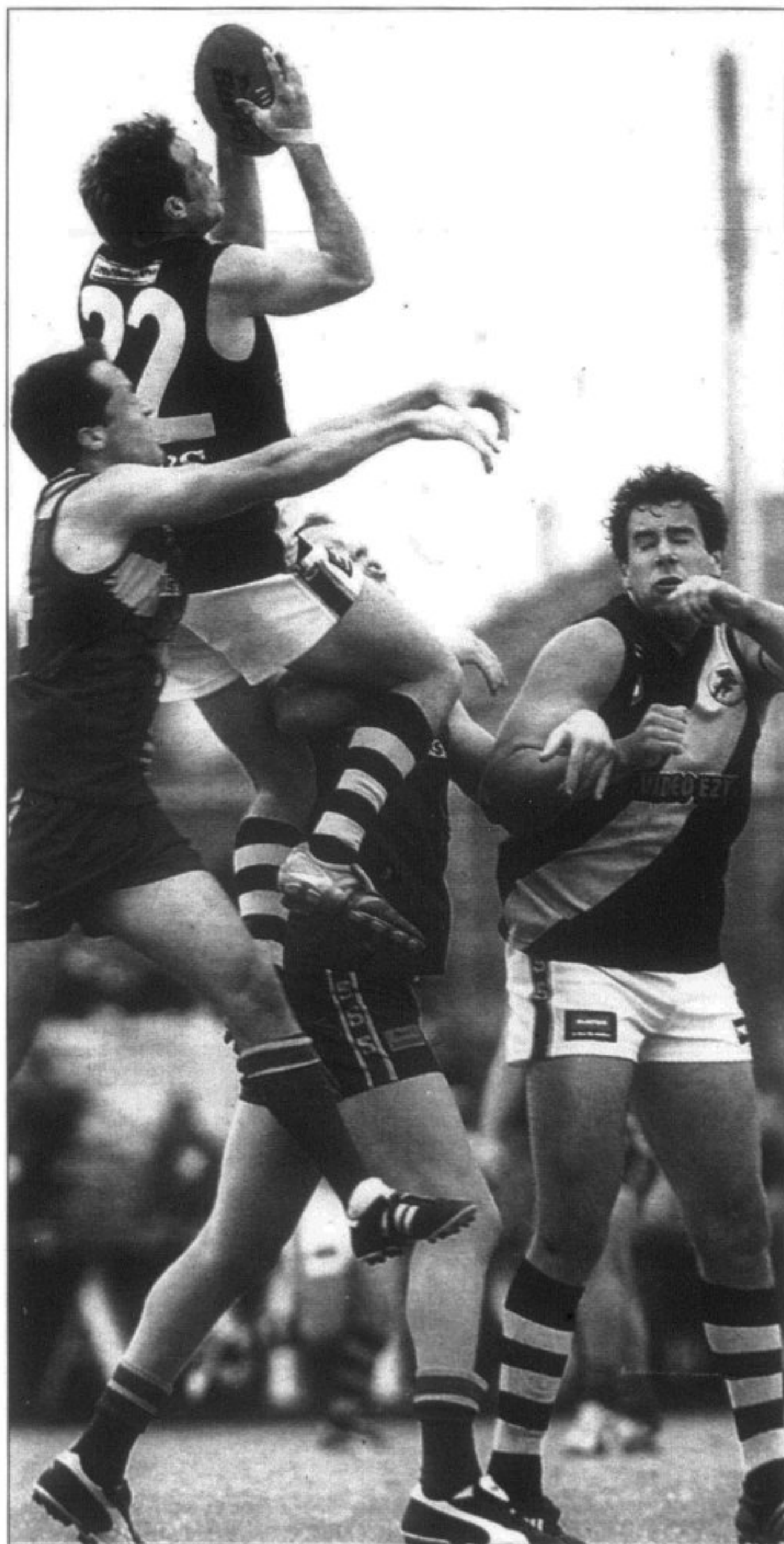
Kicking with the breeze in the second term, the Tigers kept their noses in front until four minutes into the third quarter, ruing some misses that could have established a handy lead.

The re-invigorated Eagles should have blitzed Glenelg in this term but produced passes into attack that gave their forwards no chance.

In farcical football, every player - bar Fergus Watts and opponent Jacob Schuback - were in the Tigers' back half for periods in the quarter. Watts showed impressive versatility at centre half-back, playing on fellow Crow Schuback.

The Eagles, led by Skipworth, fellow Crow Robert Shirley, Colville and McKenzie, were able to answer every challenge.

Justin Cicolella and Tim Inkster fired up after half-time, presenting the Eagles the options across half-forward they had lacked earlier. They did as they pleased in the last term with Matthew Golding kicking Glenelg's only major of the second half, 21 minutes into the final quarter.



SCREAMER: Tiger Luke Panozzo marks spectacularly against the Eagles at Woodville Oval. **Picture:** Tait Schmaal

| EAGLES | | | | | | | | | | |
|---------------|------------|-----------|------------|-----------|----------|-----------|-----------|-----------|-----------|--|
| Kicks | Mks | Hbl | F/for | F/ag | Gls | Pts | H/O | Tkl | | |
| CICOLELLA | 19 | 7 | 9 | 2 | 0 | 3 | 1 | 0 | 2 | |
| PASSADOR | 4 | 2 | 2 | 2 | 1 | 4 | 0 | 0 | 1 | |
| WATTS | 6 | 5 | 6 | 0 | 0 | 0 | 0 | 0 | 0 | |
| RUGOLO | 5 | 1 | 6 | 2 | 0 | 0 | 0 | 0 | 3 | |
| ELLIS | 9 | 6 | 4 | 0 | 0 | 3 | 4 | 0 | 1 | |
| INKSTER | 12 | 7 | 3 | 1 | 1 | 1 | 3 | 1 | 1 | |
| COLVILLE | 12 | 4 | 9 | 0 | 0 | 0 | 1 | 0 | 2 | |
| MCKENZIE | 23 | 11 | 6 | 1 | 1 | 0 | 0 | 0 | 2 | |
| MERRIMAN | 2 | 0 | 2 | 1 | 1 | 0 | 0 | 0 | 1 | |
| POWELL | 12 | 3 | 4 | 1 | 0 | 0 | 0 | 0 | 0 | |
| FREWEN | 9 | 7 | 5 | 1 | 0 | 1 | 0 | 0 | 1 | |
| POTTER | 12 | 5 | 3 | 2 | 1 | 0 | 0 | 0 | 2 | |
| FLOREANI | 5 | 3 | 6 | 0 | 0 | 0 | 0 | 0 | 0 | |
| PHILLIPOU | 7 | 3 | 1 | 0 | 0 | 1 | 0 | 0 | 2 | |
| TOIA | 10 | 7 | 6 | 1 | 0 | 0 | 1 | 0 | 2 | |
| OHARA | 3 | 4 | 6 | 1 | 1 | 0 | 0 | 17 | 2 | |
| SHIRLEY | 17 | 6 | 11 | 2 | 0 | 0 | 1 | 0 | 3 | |
| SKIPWORTH | 17 | 3 | 10 | 4 | 0 | 0 | 2 | 0 | 3 | |
| WESTBROOK | 3 | 0 | 3 | 0 | 0 | 1 | 0 | 0 | 1 | |
| LINDSAY | 7 | 2 | 5 | 2 | 2 | 0 | 0 | 17 | 0 | |
| STOKES | 2 | 0 | 2 | 0 | 1 | 0 | 1 | 0 | 0 | |
| Totals | 196 | 86 | 109 | 23 | 9 | 14 | 17 | 35 | 29 | |

| GLENELG | | | | | | | | | | |
|---------------|------------|-----------|------------|----------|-----------|----------|----------|-----------|-----------|--|
| Kicks | Mks | Hbl | F/for | F/ag | Gls | Pts | H/O | Tkl | | |
| ANDREWS | 8 | 6 | 6 | 2 | 1 | 0 | 0 | 9 | 3 | |
| CRANSTON | 0 | 0 | 3 | 0 | 1 | 0 | 0 | 4 | 0 | |
| ALLISON | 5 | 5 | 5 | 0 | 3 | 0 | 1 | 0 | 4 | |
| PANOZZO | 6 | 2 | 6 | 0 | 0 | 2 | 0 | 0 | 0 | |
| VLATKO JAMIE | 7 | 7 | 5 | 0 | 0 | 0 | 0 | 1 | 1 | |
| MCENTEE | 2 | 1 | 3 | 1 | 0 | 0 | 1 | 0 | 1 | |
| COOK | 9 | 5 | 6 | 0 | 2 | 1 | 0 | 0 | 4 | |
| NEELY | 15 | 3 | 17 | 0 | 2 | 1 | 0 | 0 | 1 | |
| MOORE | 13 | 4 | 13 | 0 | 1 | 0 | 1 | 0 | 5 | |
| RAIDS | 7 | 3 | 5 | 0 | 0 | 0 | 0 | 0 | 0 | |
| MILLER | 1 | 0 | 1 | 0 | 0 | 0 | 0 | 0 | 0 | |
| CULPITT | 15 | 1 | 14 | 1 | 3 | 0 | 0 | 0 | 2 | |
| MANFIELD | 7 | 1 | 15 | 0 | 1 | 0 | 0 | 0 | 5 | |
| SHERWOOD | 7 | 5 | 8 | 1 | 1 | 0 | 1 | 0 | 2 | |
| STATHAM | 8 | 5 | 5 | 0 | 1 | 0 | 0 | 0 | 1 | |
| GOLDING | 5 | 2 | 3 | 1 | 1 | 2 | 1 | 1 | 1 | |
| SCHUBACK | 11 | 4 | 7 | 0 | 1 | 0 | 3 | 0 | 2 | |
| BACKWELL | 8 | 0 | 16 | 3 | 4 | 1 | 0 | 0 | 1 | |
| DULDIG | 6 | 2 | 5 | 0 | 1 | 0 | 0 | 0 | 0 | |
| WOODS | 3 | 2 | 2 | 0 | 0 | 0 | 0 | 0 | 0 | |
| MORRIS | 1 | 0 | 1 | 0 | 0 | 0 | 0 | 0 | 3 | |
| Totals | 144 | 58 | 146 | 9 | 23 | 7 | 9 | 15 | 36 | |

| SANFL | P | W | L | For | Agst | % | Pts |
|---------|---|---|---|-----|------|-------|-----|
| CENTRAL | 7 | 6 | 1 | 831 | 476 | 63.58 | 12 |
| EAGLES | 6 | 5 | 1 | 563 | 424 | 57.04 | 10 |
| NORTH | 6 | 4 | 2 | 522 | 530 | 49.61 | 8 |
| WEST | 6 | 3 | 3 | 505 | 594 | 45.95 | 6 |
| STURT** | 5 | 2 | 3 | 419 | 411 | 50.48 | 4 |
| SOUTH* | 5 | 2 | 3 | 374 | 409 | 47.77 | 4 |
| NORWOOD | 6 | 2 | 4 | 517 | 655 | 44.11 | 4 |
| PORT* | 5 | 1 | 4 | 410 | 449 | 47.73 | 2 |
| GLENELG | 6 | 1 | 5 | 442 | 635 | 41.04 | 2 |

* To be played tomorrow ** Bye

GOALS

| Player | P | R7 | Total |
|----------------|---|----|-------|
| Schell (CD) | 7 | 6 | 23 |
| Passador (E) | 6 | 4 | 20 |
| Neill (Nor) | 6 | 1 | 18 |
| Prokopec (CD) | 7 | 1 | 18 |
| Chambers (St) | 5 | * | 16 |
| Hargraves (NA) | 6 | 6 | 16 |

NEXT WEEK

| | | |
|---|-------------------|---|
|  | CENTRAL V SOUTH |  |
|  | PORT V EAGLES |  |
|  | STURT V WEST |  |
|  | GLENELG V NORWOOD |  |

BYE: NORTH

SCOREBOARD

Eagles v Tigers

| | | | | | |
|---|-----|-----|------|-------|-------|
| EAGLES | 3.4 | 4.5 | 9.11 | 14.17 | (101) |
| GLENELG | 4.1 | 6.6 | 6.6 | 7.9 | (51) |
| GOALS - Eagles: Passador 4.0; Ellis 3.4; Cicolella 3.1; Inkster 1.3; Frewen, Phillipou 1.0; Skipworth 0.2; Colville, Toia, Shirley, Stokes 0.1; 0.3 rushed. Glenelg: Golding 2.1; Panozzo 2.0; Cook, Neely, Backwell, Westbrook 1.0; Schuback 0.3; Sherwood, Moore, McEntee, Allison 0.1; 0.1 rushed. | | | | | |
| BEST - Eagles: McKenzie, Skipworth, Cicolella, Shirley, Watts, Colville. Glenelg: Culpitt, Neely, Moore, Manfield, Backwell, Sherwood, Cook. | | | | | |
| Injuries - Eagles: Passador (hamstring). Glenelg: Manfield (corked thigh), Andrews (cut above eye), Vlatko (bruised sternum). | | | | | |
| Umpires - R Fox, C Rowston, G Fila | | | | | |
| Crowd - 1965 at Woodville Oval. | | | | | |

SCOREBOARD

Bloods v Roosters

| | | | | | |
|---|-----|-----|-----|-------|------|
| NORTH | 4.0 | 6.4 | 9.6 | 14.11 | (95) |
| WEST | 2.3 | 2.6 | 6.7 | 9.9 | (63) |
| GOALS - North: Hargraves 6.2, Younie 1.2, Macgowan, Bamford 1.1, Roe, B. White, Jeffries, Grocke, Cook 1.0, Motlop, Ebert, Ivans, Sutherland 0.1. rushed 0.1. West: Nordhausen 1.2, Rutten, Malinovski, Myles 1.1, Eagleton, Hahn, Howard, Rusca, Norman 1.0, Hassan, Dabrowski, Dray 0.1. rushed: 0.1. | | | | | |
| BEST - North: Hargraves, Grocke, B. White, Ivans, Macgowan, Ebert, Wintle. West: Howard, Malinovski, Porplyzia, Dray. | | | | | |
| INJURIES - North: Younie (concussion). West: Chubb (knee), Hassan (corked thigh), Hahn (cut head). | | | | | |
| CROWD - 1996 at Broadpectrum Oval. | | | | | |

SCOREBOARD

Redlegs v Bulldogs

| | | | | | |
|---|-----|------|------|-------|-------|
| CENTRAL | 5.3 | 13.6 | 15.7 | 22.9 | (141) |
| NORWOOD | 4.1 | 4.2 | 8.7 | 11.14 | (80) |
| GOALS - Central: Schell 6.1, Healy 4.0, J. Gowans 3.0, Cochrane, Thomas 2.0, Bello 1.2, C. Gowans, Ware 1.1, Prokopec, Slade 1.0, Switala 0.2, Cowan 0.1, rushed 0.1. Norwood: Bartemucci 2.2, Borlace 2.0, Neill, Bown, Grundy, Carslake, Thomas 1.1, B. James, Verco 1.0, Patfull 0.3, Hazell, Calabrese 0.1, rushed 0.2. | | | | | |
| BEST - Central: Schell, Switala, McKenzie, J. Gowans, Ware, C. Gowans, Thomas. Norwood: Bown, B. James, Grundy, Bartemucci, Campbell. | | | | | |
| REPORTS - Thomas (Norwood) by umpire Williams for allegedly striking Hay. Haythorpe (Norwood) by umpire Williams for allegedly striking J. Gowans. | | | | | |
| UMPIRES - S. Hay, R. Williams, D. Joyce. | | | | | |
| CROWD - 3208 at Norwood Oval. | | | | | |