

Tigers run rampant

By ALAN SHIELL

Glenelg recovered from a sluggish start to stun and eventually topple Port Adelaide by 52 points in a fiercely fought Foundation Cup match in front of 21,239 appreciative spectators at Football Park last night.

Glenelg's strong-marking centre half-forward Michael Murphy, who also had a stint on a forward flank, kicked seven goals in a spectacular, match-winning performance that would have made a big impression on the Adelaide Crows' selectors, who still could include him in their squad to play Geelong in the Foster's Cup game at Football Park on Wednesday night.

Down 22 points 11 minutes into the first quarter (0.3 to 4.1), Glenelg lifted its workrate sufficiently to outscore Port 16.12 to 4.10 in the last 3½ quarters.

Glenelg led by two points at half-time and 34 at three-quarter time, then surged further ahead to confirm its superiority on the night.

Both teams had so many players unavailable because of Crows' commitments, injuries, sickness and even a honeymoon(!) that no emphatic conclusions could be drawn from the result.

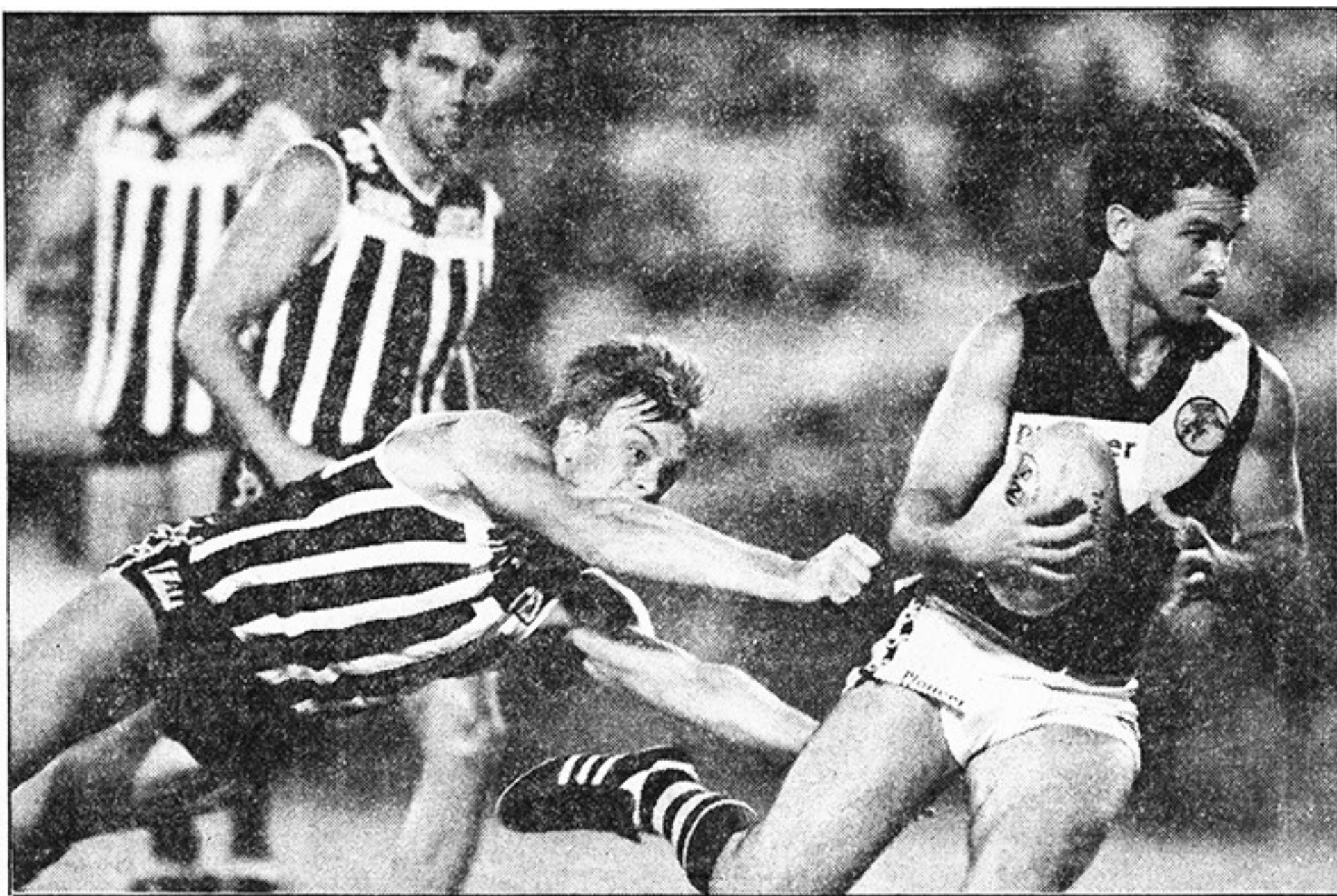
But the sheer competitiveness of the match was a tribute to the advanced fitness of both teams — and the size of the crowd was a huge fillip for the South Australian competition, which still is very much alive and kicking, based on the on and off-field happenings of last night.

SA National Football League officials, and those of Glenelg and Port, who are accustomed to playing in front of big crowds, were drooling over the crowd figure, particularly as the match — and some of the early game between North Adelaide and Sturt — was televised live by Channel 9.

Glenelg coach Kym Hodgeman was unavailable to comment on his team's win. He had a quick chat with his players and officials before dashing off with his wife to collect their young children from a babysitter!

Glenelg football director Laurie Rosewarne said: "It was a pleasing effort for our first full-scale game, and very encouraging from the junior players' point of view."

Port coach John Cahill said: "I thought we struggled after the first quarter. It was hard to find a winner for us.



Glenelg's Ross Gibbs eludes Port's Mark Williams and a diving Brett Chalmers at Football Park last night.

Picture: NARELLE AUTO

Foundation Cup, Round 1 -- played Friday, 9 February, 1991

GLENELG	2.3	6.9	12.13	16.15	(111)
PORT	4.5	6.7	7.9	8.11	(59)

SCORERS — Glenelg: Murphy 7.1, Salisbury 3.0, Chigwidden, Hocking 1.2, Deane 1.1, Symonds, Bartlett, Hele 1.0, Rouvray 0.2, Seeborn 0.1, rushed 0.6. Port: Tylor 4.2, M. Williams 2.0, Boyd 1.1, P. Williams 1.0, Grimm 0.2, Settre, Chalmers, P. Kemp, Abernethy 0.1, rushed 0.2.

BEST — Glenelg: Murphy, Deane, Salisbury, Symonds, Chigwidden, Rouvray, Hele, Donovan, Thornborrow. Port: Phillips, Tylor, Poole.

"As the game got going, Glenelg played very well whereas we struggled.

"We would have hoped for a lot closer contest than that.

"We fell to the ground too much and too many players often flew for the ball together.

"They were things which normally are foreign to our team patterns."

Glenelg strode on to the victory trail by outscoring Port 6.4 to 1.2 in the third quarter.

Murphy bobbed up everywhere, even in the goalsquare, and sank four of those six goals. He also booted one in the first term and two in the last.

He had eluded Port's man-mountain centre half-back Greg Phillips by beginning the third quarter on a forward flank, with John Seeborn moving off the bench to centre half-forward, Paul Rouvray from full forward to centre half-back, Craig Elias from centre half-back to full back and Allan Bartlett from full back to full forward.

Murphy dusted off successive opponents Mark Warton and Shane Grimm as though they weren't there.

Left-footer Brett Deane was an inspirational bundle of energy and commitment at centre for Glenelg, new captain Scott Salisbury booted three goals as a forward flanker in the second quarter and

rover Nick Chigwidden hurled himself into the fray in the second half, having opened on the bench.

Simon Hele made a promising debut on a wing and experienced Tony Symonds did some good work on the other wing.

Mark Russell, another debutant, and Mark Donovan, resuming after missing all of last season because of a knee reconstruction, were vigorous half-back flankers, and young ruckman Wayne Thornborrow also was conspicuous in his first senior outing.

Phillips was Port's best player, Mark Tylor kicked four goals from full forward — and looked a Scott Hodges' clone while kicking three of them in the first quarter — and ruckman Darryl Poole and wingman Christian Thomson had their moments.