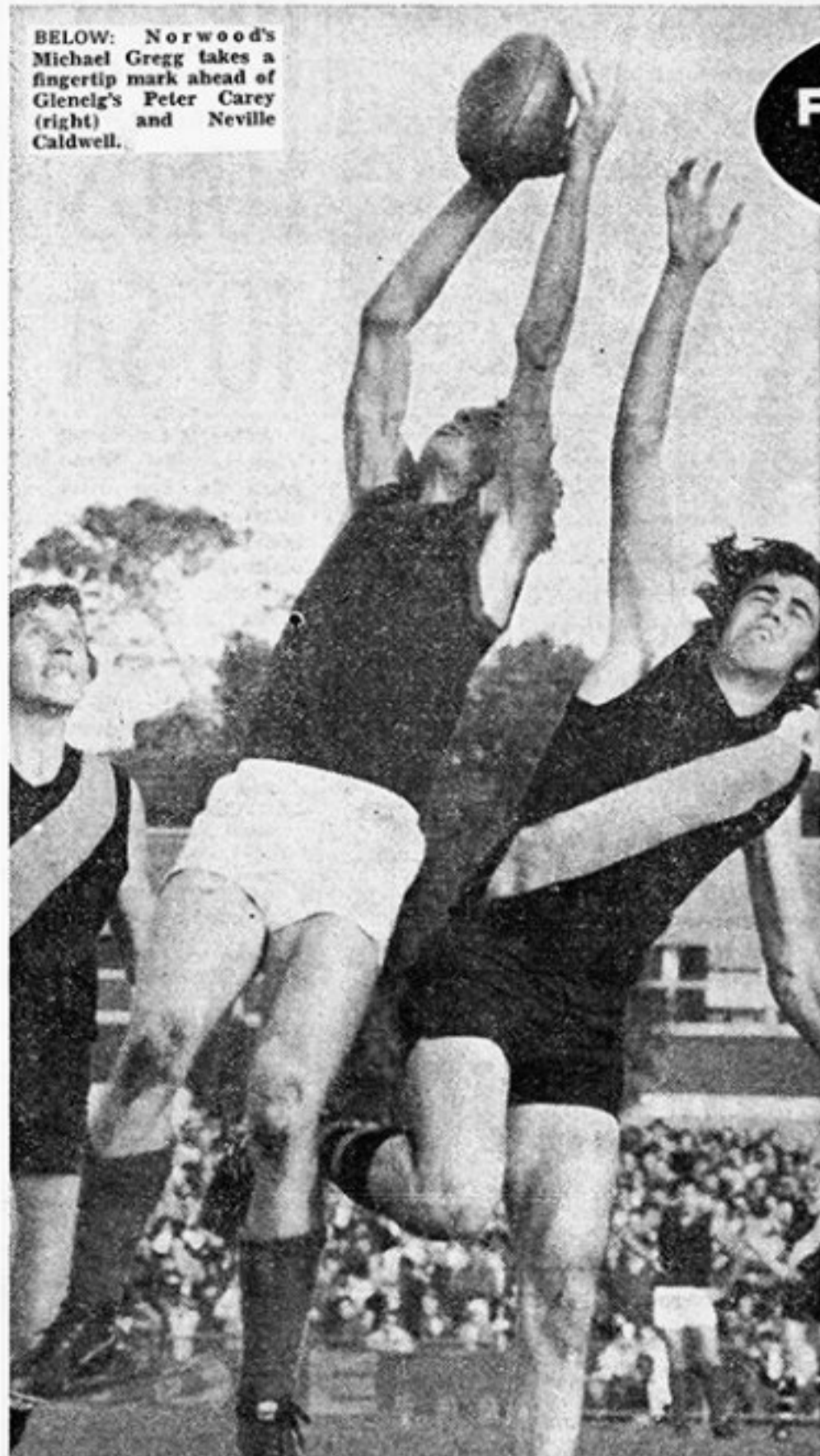


# BAYS BACK IN FINALS TUSSLE

BELOW: Norwood's Michael Gregg takes a fingertip mark ahead of Glenelg's Peter Carey (right) and Neville Caldwell.



## Sunday Mail FIRST FOR FOOTBALL

By Alan Shiell

Glenelg, league football's "unpredictables," rejuvenated their final four prospects with a crushing 14-goal win over Norwood at the Bay Oval in today's eleventh round.

And Port, embarrassed by Norwood last week, burst South's bubble with a 59-point win at Adelaide Oval.

Centrals met unexpectedly stiff opposition from West before running away in the last quarter to win by 33 points at Richmond.

And Torrens defeated Woodville by 16 points at Woodville in a game which demonstrated why both sides are at the rear end of the premiership table.

Glenelg's shock big win came after successive losses to Centrals, Port and North which had left doubts about the Tigers' ability to clinch a berth in the finals.

Norwood had won their last five games.

Today's defeat cost the Redlegs top place and they will slip to third position if North beat Sturt on Monday.

Although without Robert Oatey and Phil Carman, Norwood's form was inexplicable considering they had brushed Port aside so easily in the last quarter at Alberton last week.

In losing to Port, South scrambled only 8-12 after kicking 19-16, 18-11 and 20-20 in their last three matches.

There were some significant individual performances from a State team viewpoint.

The SA squad of 25 for the Australian championships beginning in Perth next Saturday will be chosen on Monday night after the Sturt-North clash at Adelaide Oval.

Glenelg ruckman Wayne Phillis and follower Graham Cornes played well enough at the Bay to clinch a trip to Perth.

So, too, probably did Norwood ruckman Neil Button.

However, Norwood half-forwards John Wynne and Roger Woodcock did not enhance their chances.

Neither did young Glenelg follower Peter Carey, who, it seems, may have to wait at least another year before getting his chance in interstate company.

At Richmond, West full forward Glynn Hewitt booted eight of his team's 13 goals against Centrals and could well have made certain of the reserve forward's spot in SA's 25 for Perth.

Hewitt now has kicked 50 goals in 11 games and is a clear leader on the goal-kicking list.

Centrals' ruckman Terry Moore's display today probably has made certain of his first SA guernsey.

West ruckman Ian Verrier did not improve his chances of winning State selection for the second successive year.

At Adelaide Oval wingman Mark Coombe was South's best player and looks a likely tourist.

## ALL LEAGUE DETAILS

### AT WOODVILLE

	1st	2nd	3rd	Final	Pts.
Torr.	6-7	7-10	8-15	10-19	79
Wdv.	1-1	7-4	8-5	9-9	63

SCORERS—TORRENS: Phillipou 4.1, Faletic 1.5. F. Bills 1.1, McSporran 1.1, Dabrowski 1.1, Graham 1.0, Shallow 1.0, Watson 0.3, Pavlich 0.2, Pill 0.1, Work 0.1, White 0.1, rushed 0.2. WOODVILLE: Buckley 3.2, Sewer 2.1, O'Connor 2.0, Huppertz 1.1, Cummins 1.0, Blight 0.3, Willmott 0.1, rushed 0.1.

BEST PLAYERS—TORRENS: J. Graham, White, B. Bills, Watson, Faletic, Work. WOODVILLE: Blight, Huppertz, Buckley, Allen, Willmott, Cummins.

REPLACEMENTS—TORRENS: Barnes (concussion) by Floreani second quarter; Watson by Foote third term. WOODVILLE: Abraham (hamstring muscle) by Reid at half-time; Stemper (knee strain) by Winstanley.

UMPIRE—M. O'Connell.

### AT GLENELG

	1st	2nd	3rd	Final	Pts.
Glen.	7-9	10-9	14-15	19-16	130
Nwd.	1-1	3-3	5-3	6-10	46

SCORERS—GLENELG: Sandland 7.3, D. Phillis 5.1, Marriott 4.1, Osborn 1.1, Cornes 1.1, Carey 1.1, W. Phillis 0.2, MacFarlane 0.1, rushed 0.5. NORWOOD: Button 2.0, Coligan 1.2, Pettingill 1.2, Woodcock 1.1, Wynne 1.0, Hines 0.2, Menz 0.1, rushed 0.2.

BEST PLAYERS—GLENELG: W. Phillis, Rosewarne, Sandland, Cornes, Caldwell, Colbey. NORWOOD: Button, Harris, Menz, Poulter, Butchart, Gregg.

REPLACEMENTS—NORWOOD: Wynne by Schlein in the final term.

UMPIRE—J. Caulfield.

### AT RICHMOND

	1st	2nd	3rd	Final	Pts.
Cent.	2-1	8-7	11-9	18-13	121
West	6-3	7-4	12-6	13-10	88

SCORERS—CENTRALS: Haughan 5.3, Muir 3.3, Mulholland 3.1, Skinner 2.0, Norsworthy 1.1, Saywell 1.1, Mobbs 1.0, O'Connor 1.0, Casserly 1.0, R. Cochrane 0.1, rushed 0.3. WEST: Hewitt 8.1, Kennedy 2.1, Nicholson 1.2, Keane 1.1, Tuckey 1.0, Pope 0.3, Fraser 0.1, Verrier 0.1.

BEST PLAYERS—CENTRALS: R. Cochrane, Moore, Nicks, Vivian, Haughan, Norsworthy. WEST: Hewitt, Fraser, Kennedy, Keane, Schapel, Russian.

REPLACEMENTS—CENTRALS: Moore (bruised calf) by Spaans last term. WEST: Papst (torn knee ligaments) by Leonard second term; Tuckey by Thompson in the last term.

UMPIRE—D. Foster.

### AT ADELAIDE

	1st	2nd	3rd	Final	Pts.
Port	6-7	10-10	13-21	16-23	119
South	1-2	1-7	4-7	8-12	60

SCORERS—PORT: Marrett 5.3, Maynard 4.0, Cunningham 2.3, Grimwood 2.2, James 1.4, Woite 1.1, Spencer 1.0, Nyland 0.2, Broadbridge 0.2, Light 0.1, Kingston 0.1, rushed 0.4. SOUTH: Howlett 2.3, Backman 2.1, Darley 2.1, Coombe 1.1, Young 1.0, Darcy 0.2, Ryan 0.1, Bowden 0.1, Reid 0.1, rushed 0.1.

BEST PLAYERS—PORT: Kingston, Spencer, Broadbridge, Hayes, Marrett, Maynard. SOUTH: Coombe, Darley, Ryan, Darcy, Reid, Young.

REPLACEMENTS—PORT: Davies (bruised ribs) by Nicholls in third term. Beswick (ankle injury) in last term by R. Gerlach. SOUTH: A. Bennett (concussion) by R. Haines in first quarter. Reimann (bruised thigh) by Bowden in last term.

UMPIRE—M. Ducker.

### NEXT WEEK

MONDAY

North v. Sturt, Adelaide.

SATURDAY

West v. Woodville, Adelaide; Centrals v. South, Elizabeth; Torrens v. Port, Thebarton.

### TOP GOALKICKERS

	Today	Matches	Total
Hewitt (West)	8.1	11	50.22
Coligan (Norwood)	1.2	11	41.33
D. K. Phillis (Glenelg)	5.1	8	41.19
Sandland (Glenelg)	7.3	11	33.17
Mulholland (Centrals)	3.1	11	31.26
R. Woodcock (Norwood)	1.1	11	29.20
Saywell (Centrals)	1.1	11	29.17

### ATTENDANCES

Glenelg	15,693
Adelaide	11,575
Richmond	5,191
Woodville	4,103
Total	36,562
Season total	542,955
Comparative 1971 total	471,634

### PREMIERSHIP TABLE

	P.	W.	L.	For	Agst.	Pts.	Prems.	%
Centrals	11	9	2	1195	1001	18	54.41	
Norwood	11	8	3	1158	1057	16	52.27	
North	10	7	3	1120	734	14	60.40	
Port	11	7	4	1228	1021	14	54.60	
Glenelg	11	6	5	1233	1062	12	53.72	
Sturt	10	5	5	1024	861	10	54.32	
Woodville	11	4	7	1051	1309	8	44.53	
West	11	3	8	969	1185	6	44.98	
Torrens	11	3	8	901	1119	6	44.60	
South	11	2	9	880	1410	4	38.42	

# Bays spurt—that was it

Glenelg, after bouncing away to a flying start, were never challenged and thrashed a disappointing Norwood at Glenelg Oval.

With the breeze, the Bays were thumped into attack from the first bounce by W. Phillis and the move finished with a fine snapped goal by wingman-cum-rover Osborn.

BY  GERRY HARRISON

	1st	2nd	3rd	Final	Pts.
Glen.	7-9	10-9	14-15	19-16	130
Nwd.	1-1	3-3	5-3	6-10	46

Although it took Glenelg another 11 minutes before they posted their next goal, the Redleg defence was under severe pressure and it was only a matter of time before it cracked.

Poulter, in opposition to Glenelg's Sandland, had stopped everything with timely marks, but his effort eventually gave way.

Sandland relished the privilege of not having the ball punched away when contesting a mark and finished the day with seven excellent goals.

But for the fighting defence of the diminutive Harris in the back pocket, Glenelg would have kicked a mammoth score.

He received valuable support from Menz, when resting, but generally the whole Norwood defence was overworked and struggled without success.

The Bays' superiority stemmed initially from their ruck strength where the bodywork of Wayne Phillis was invaluable.

Button was the only Norwood player to offer any real resistance in this department, but he lacked support from his ruck-rovers.

With winning rucks, Glenelg quickly set up an ascendancy across centre and it was not until the final term that they were challenged on this line.

McFarlane, a late inclusion due to Voigt's withdrawal, was a prolific kick-getter and, with Millard, quelled the Redlegs' normal driving forces—Rosser and Packer.

Apart from the rucks, the Bays' biggest strength was across half-back, where the whole line won handsomely.

Rosewarne returned to form with a vengeance in shutting Norwood's Woodcock completely out of the game—as well as giving valuable rebound.

Caldwell gave tremendous rebound, too, in the first half and continued to outpoint Wynne for the entire game. Colbey completed a solid line.

Generally, Norwood failed to counter Glenelg's physical strength and showed no real fight when required.

The Bays' ability to play in front, be first to the ball, and back each other up gave them a decided advantage and they made the most of their chances.