

WEST, PORT IN GRAND FINAL



SOUVENIR
OF
PRELIMINARY
FINAL

Come back with that ball...!

Experts differ in choice of premiers

Undisputed leaders in the 1959 competition, Port and West, will meet next Saturday in their fourth grand final clash in the past six years.

Sunday Mail writers and league captain-coaches are divided in their selection of the premiership team.

Vic Johnson and Jeff Pash select Port and Sam Gallagher and Gil Langley favor West.

Port captain-coach Geoff Motley is convinced Port will go top.

"Port have improved more from today's outing than from their performance against West last week," he said.

"After today we would be as close as possible to our peak form."

Neil Davies, Glenelg captain-coach, favors Port to win the premiership.

"Pressure was the telling factor today and I doubt if West can keep it up," he said.

Glyn Williams, Sturt captain-coach leans to West.

"Even after seeing Port's fast, close, and attacking method today, I think West will have sufficient power to scrape home," he said.

Other club leaders were not available tonight for comment.

AT PEAK

Vic Johnson favors Port because he expects a much improved showing across centre and a tighter defence than when they met West in the second semi-final.

He considers also that today's game has brought Whelan, Boyd, Zucker, and Tull to their peak for the big game.

Superior overall individual brilliance and proven goal-scoring ability are the main reasons Jeff Pash advances for electing Port to win.

He concedes that West's teamwork is better than Port's, but points out that the Magpies can win by strength and the long high-marking game.

Sam Gallagher considers West have the game to stop Port's triumphant progress, particularly their mastery of the play-on style in adverse conditions.

He adds that West's rovers and half-forwards have the dash and understanding to unsettle Port's steady defence.

In his own words, Gil Langley prefers "the unpredictable West to the reliable Port."

He adds that West will win under any conditions, but that the margin will be narrower if it is wet.



OH NO YOU DON'T... I. T. Obst, of Port (left), crashes to the ground as he tries to stop Glenelg's F. Howard (with the ball). At right is Glenelg's captain, D. Hewett. Other players are K. Kelly (Port) and R. Leahy (Glenelg).

THIRD TERM TOLD

Down two points at half time, Port made one act of the third term practically to settle the issue, and to win their way into the grand final.

Their margin against Glenelg at the finish was 59 points.

Glenelg did equally as well as Port to half-time, although the Magpies' goal-getting was somewhat astray.

By their victory, Port have again earned the right to play in a grand final, and will face up to West next Saturday.

I thought Port were inclined to claim the opponent too much in the opening term, as the frees awarded will show.

To this, and an early advantage at centre, where Herron began finely, I attribute Port's small margin then.

Wing switch

To me, this always appears a sure sign of sluggishness, and I think that was how Port played it in the opening stages.

They had a clear advantage on the two wings, where Thompson and Cahill were too fast and sure for their immediate opponents.

It was no surprise to see a quick switching of the Glenelg pair.

The switch had little or no effect. The Port pair by two points. Hill, at centre throughout, and when Motley really got going at centre, Port began to look a better side.

Hadyh Linke, the younger of the Glenelg brothers, had managed to hold his half-back flank under control, and farther back Kevin Abley defended dashing.

There was plenty of hard bumping and other

means of upsetting players going on in this first half. At one stage there was a gathering of players with designs on each other, but it was quickly broken up.

At half-time Glenelg led combined in control half-forward, had been the chief cause of destruction, and Richens, too, had become very prominent.

Good defence

Trevor Obst, the Magpie pocket player, and Tierney, at half-back right, had both figured strongly in their defence, clearing with good handball or well-placed kicks.

Zucker and Boyd were both the springboards for Port's demoralising third term.

The tall Magpie follower controlled the centre bounces after half-time and Boyd was very elusive between centre and half-forward.

Port	2-7	4-12	11-17	16-23	119
Glenelg	2-3	5-8	5-11	8-12	60

BEST PLAYERS—PORT: Thompson, Zucker, Cahill, Motley, Tierney, Obst, Luke, GLENELG: H. Linke, Richens, Herron, Hill, Leahy, K. Abley, Butler.

SCORERS—PORT: Obst (3.2), Zucker (3.1), Luke (3.1), Dittmar (2.8), Williams (2.3), Tull (2.1), Boyd (1.2), Potter (0.2), Cahill (0.1), Motley (0.1), rushed (0.1). GLENELG: Howard (2.2), Richens (2.2), Cullen (1.1), Pemberton (1.1), Leahy (1.1), Hill (1.0), Hewett (0.2), Fraser (0.1), Herron (0.1), rushed (0.1).

REPLACEMENTS—PORT: Zucker (bruised thigh) replaced by Marrett in the last term. GLENELG: Abley (ankle injury) replaced by Kernahan in the last term; Dickinson (leg injury) replaced by Beale in the last term.

ATTENDANCE: 39,900.



By Vic Johnson

It was all Port in this term.

Thompson and Cahill streamed through the half-backs for Glenelg while Motley from centre kept dropping the long ones into the goalmouth.

Dittmar led splendidly for his kicks, but just could not get them through.

Peter Obst and Luke each took charge of their respective positions at half-forward.

Inside of eight minutes the whole complexion of the game had changed, as Port scored four goals.

Before the term ended, Glenelg, which had begun so promisingly, began to fall apart.

Forty-six points from Port, before Glenelg found an answer and then only points, three for the term.

It was hard to find one really prominent player for Glenelg in this term.

Glenelg's plight was evident in the last term when Pemberton was brought out to centre half-forward, Hewett going to the goal-front.

Later, Ambrose Linke replaced Dickinson at centre wing Dickinson going to half-forward.

In a further switch, Leahy went to half-back and Herron to the half-forward flank. But the game had truly gone against them by that time.

Token fight

The Bays made some sort of a token fight in the last term, but Port went further away to win very easily.

Thompson made a splendid return to Port's wing, showing great speed and footpassing finely.

Zucker had a great day from just before half-time.

Cahill, Tierney, Motley, Luke, and Trevor Obst were others to play an important part in the victory.

Haydn Linke made a splendid debut for Glenelg at half-back, and I consider him Glenelg's best.

Hill, Herron, Richens, Leahy, Webber, and Butler were others under notice at times.

Bays bow to brilliant burst

After a brilliant third quarter in which they kicked 7-5 to Glenelg's three points, Port Adelaide went on to win the preliminary final by 59 points at Adelaide Oval today.

Glenelg led by two points at half-time.

But they were hopelessly outclassed when Port swung into top gear and played precision football. Port will meet West in the grand final next Saturday.

P. Obst, Zucker, and Luke each kicked three goals for Port.

Any breeze which may have been blowing favored the south-eastern pocket, when play started.

The oval was in splendid condition.

The opening attendance was estimated at 30,000. Umpire J. L. Sweeney was in charge, with M. C. Durbridge in reserve.

Port kicked to the river end, Motley having won the toss. There were no alterations to the selected teams.

Glenelg were first to get going, but from a series of attacks, only a point came to Richens. Port were claiming the opponent a bit.

Twice K. Abley cleared when Port appeared dangerous, but Cahill put Williams in possession for the Magpies' first goal.

Haydn Linke cleared safely for Glenelg twice in succession. Tierney replied for Port. But K. Abley dropped a "sitter" for Port.

Howard picked up and snapped truly for Glenelg.

Wings switched

A lovely pass from Hill to Pemberton brought up Glenelg's second goal. Dittmar could only manage a point from a snap for Port.

Glenelg had already switched their wings. Haydn Linke was again prominent in their defence.

Cahill was winning his wing for Port as was Thompson, both were finding Dittmar on the lead but he was missing his shots.

Thompson set Port in motion which ended in Luke goaling, then a melee broke out on Glenelg's half-forward line. Port led by four points at quarter time.

First-quarter scores were Port 2-7, Glenelg 2-3.

Dittmar got his fifth point on the resumption, but Peter Obst, from a free, made no mistake and followed with a point.

Port had to withstand a series of Glenelg attacks, they were doing better but could not get the goals.

Motley, after a slow start, was now showing up at centre, but Glenelg broke back for Leahy to snap a goal and Port led by five points.

Glenelg attacked through Hill, but T. Obst relieved for Port. There was little between the teams now.

Then a remarkable thing happened. As the ball fell from the pack, Hill put his foot to it and it screwed through for a Glenelg goal.

From the centre, Port went in for Dittmar to mark on the line and kick his first goal.

Pemberton gave Hewett a chance and a point came up. Both teams were

tackling hard with Port leading three points.

A foolish effort on the part of a Port defender let Glenelg in for Richens to goal from a free.

Zucker's marking provided chances for Port, nothing came of it and just before the siren Glenelg rushed up a point to lead by two points.

Half-time scores were Glenelg 5-8, Port 4-12.

A point followed by a goal came from Boyd for Port on the resumption. Zucker figured prominently.

Again Boyd sent Port in for Tull to mark and goal, then the dashing Thompson gave Luke a chance for full results.

Zucker's control of the centre bounce sent Port in again for another goal to Luke, and Port led by 24 points.

From the eastern wing, Tull's kick was taken by Zucker for full results. They were clearly on top now.

Luke to Williams was a post-hitter. At the other end John Abley twice saved Port and, returning to the attack, Tull, from a free, kicked straight.

Bays score

It was Port at their best now as they went further with P. Obst. They had added 46 points while Glenelg stood still.

K. Abley pulled Glenelg out twice to switch play to their attack, but only a point resulted from Pemberton, then Cullen missed from easy range.

Port led by 42 points at three-quarter time.

Third quarter scores were Port 11-17, Glenelg 5-11.

Glenelg began the last quarter with a quick goal from Howard, a snap, then Port attacked strongly, but Glenelg held them up.

T. Obst defended finely to put his brother in possession for an equalising goal. K. Abley was replaced by H. Kernihan for Glenelg. Leahy went to goal.

T. Obst again saved for Port to send them into attack out of which Zucker goaled from a scrumage. They led by 51 points and then the same player rolled an easy one through.

Thompson found Dittmar on the lead but the full forward was off the mark again.

J. Abley marked well to save Port and on the rebound Tierney combined to give Williams another goal. Zucker was replaced by Marrett, for Port.

Pemberton, now at centre half-forward, sent in for Richens to make no mistake for Glenelg, but Cahill fought back at the goalfrost for Dittmar's second goal.

Port were now 65 points clear. It was all over.

Tull added another one, Richens replied for Glenelg.

Cullen goaled for Glenelg in the dying stages but Port won by 59 points.

Final Scores: Port 16-23, Glenelg 8-12.

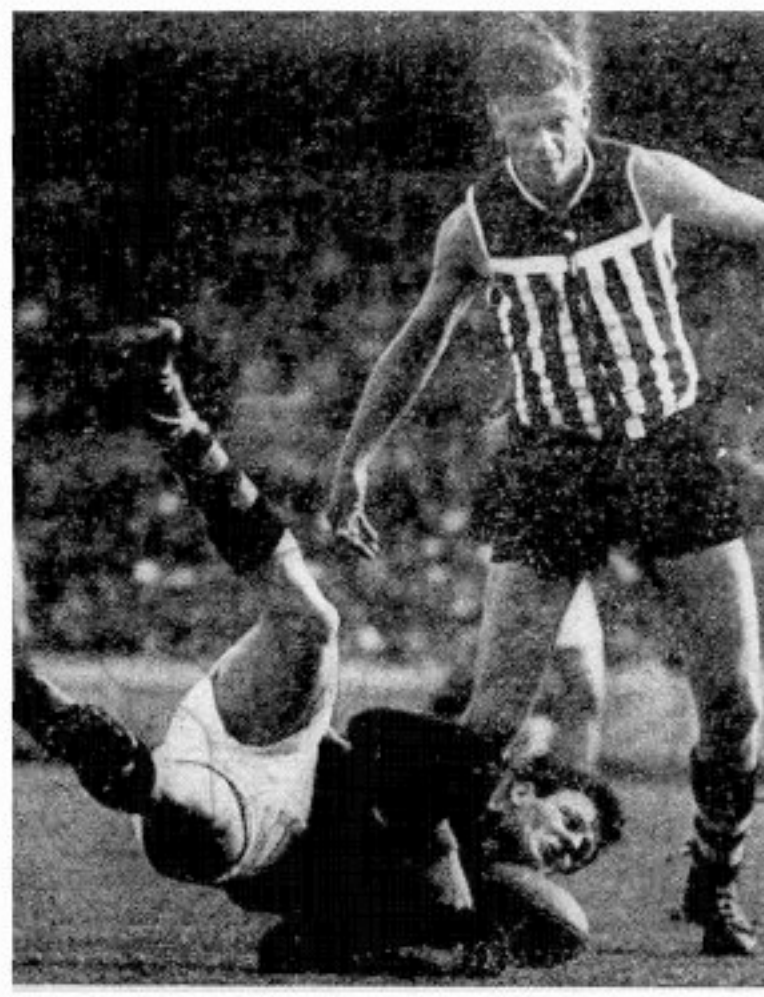


LEADING GOALKICKERS			
	Today	Matches	Total
Dittmar (Port)	2.8	17	70.61
Wright (West)	—	17	55.42
Judd (South)	—	17	52.46
Head (Torrens)	—	17	51.39
Clingly (Torrens)	—	18	51.37
Douglas (Sturt)	—	13	47.32
Fitzgerald (Sturt)	—	16	45.39
Pemberton (Glenelg)	1.1	16	44.30
Sheppard (North)	—	18	39.26

PORT player K. Kelly really gets into the spirit of the game—and nearly sprains his leg. He fought hard to get this kick around A. Linke in the preliminary final today.



GLENELG RUCKMAN D. Chisholm came through like a train to get this knock in the big game at Adelaide Oval today—and left players scattered around him. L. Zucker (Port) is on the receiving end. At right is L. Nugent (Glenelg).



UP AND OVER he goes . . . L. Nugent (Glenelg) got right down to the ground to try for this mark at Adelaide Oval today. Port ruckman L. Zucker closed in but missed out.

Captain-coaches say:

TEAM SPIRIT WON THE DAY

The team as a whole responded well and lifted their game to allow Port to win, Port captain-coach, Geoff Motley, said after today's preliminary final.

Port's centreline and rucks and rovers gave them the drive for their win, according to Glenelg coach, Neil Davies.

Here are their views after today's game:

Geoff Motley says:

"It was a pleasing result. Our form today was much more like the Port team. We won it because of a combined team effort.

"We had a lot of opportunities in our forward lines early which we did not capitalise on enough.

"But after half-time, when Glenelg were in front, the whole team lifted their game.

"Every player realised we had to do this and, without exception, they rose to the occasion. They gave it everything they had.

"Our third quarter was the best football we have played this year. We broke clear from the centre bounces and every man pulled his weight.

"Every player made full use of his kicks. Both our wingmen gave us plenty of drive and this, together with our rucks, paved the way for our win.

"Our game today was a big improvement on our performance against West last week.

"Our display gives us every reason to face the grand final next week with confidence."

Neil Davies says:

"Port's centreline and the rucks were more devastating than ours and they set the pattern for their win.

"I thought that up to half-time we had gone very well, but I still thought that we could do better.

"But once Port got going, as they did in the third quarter, we had no answer.

"Some of our fellows got rattled under the extreme Port pressure, and our lapse, because of this, helped Port tremendously.

"Port got a lot of drive from their wings. With the ball coming in regularly, this made it easier for their half-forwards.

"I thought Brian Hill started particularly well for us, but lack of opportunities restricted him.

"After today's game I think that West will have to keep the pace on for the full 100 minutes next week to beat Port.

"I also think that Port looked much better in the second half because of our inexperience."

Frees and marks

Frees and marks awarded Port and Glenelg today were:

	PORT	GLENELG
Marks	Frees	Marks
First	18	3
Second	19	8
Third	21	6
Fourth	25	4
	83	21
	60	26

STAB KICKS

In the first quarter of today's preliminary final umpire Sweeney staggered the crowd by whistling time-on while he quickly stooped to tie up a dragging boot-lace.

Most of the fire-works in the game came in the same quarter, when Glenelg were making a good show.

IN the third quarter Glenelg follower Cutten took a mark in the goalsquare. The ball was tapped out of his hands by Whelan, and umpire Sweeney allowed the ball to be played on.

The ease with which Cutten had taken the mark probably had something to do with it: it looked almost too casual to be true.

It could have been a useful goal at that stage—just before Port's rush began.

★ ★
COLIN Richens' last goal for the Tigers came from a very doubtful free kick.

In possession, Richens was tackled and thrown to the ground. It looked like holding the ball.

Umpire Sweeney must have had the slide rule out to decide for "over the shoulder."

★ ★
WALLY Dittmar, Port's full forward, had one of those days when the ball just would not go where he wanted it.

Only two goals came from numerous shots.

★ ★
A CLEAR case for the second shot for goal came up in the Association grand final between Port and North.

B. Taylor, North, goaled with his shot, and was immediately pushed in the back by an opponent. No second kick was allowed.

★ ★
PORT follower Ted Whelan obviously had an eye on the grand final with the game safe in the last quarter today.

He continued to drive

himself hard all the way, and could be back somewhere near his physical peak for the big game.

★ ★
WHY wasn't Glenelg's leading ruckman Branson in ruck at the start of the third quarter?

Lloyd Zucker started Port on their winning run, while Branson "rested" in a back pocket.

★ ★
GLENELG jumped out almost as quickly as West did last week in the first quarter.

However, they just could not manage the goals that might have kept them going.

Pemberton's first shot, won very early, just fell short; and Hewett missed a fairly easy shot from a free given just before the bell.

★ ★
NO doubt about the resilience of youth! Port wingman John Cahill stopped a jarring shotfront bump from Ambrose Jenke, but picked himself up almost at once and went on being one of Port's best players.

★ ★
GLENELG'S fourth goal came as the result of a well-judged soccer kick off the ground by their centre half-forward Brian Hill.

It was probably the easiest of the match, as it turned out, though it was hooked from a crowded and most unpromising position.

★ ★

FOR Port Seconds coach, Jack McCarthy, today's win over North was his fifth premiership with Port sides in the past nine years.

Four of these were with the Senior Colts. He was appointed Seconds coach at the



By Sam Gallagher

Centres and Zucker star

Port's powerful centreline and a magnificent display in ruck by Lloyd Zucker from the second quarter onward made a shambles of Glenelg's high hopes, says Sam Gallagher.

Although the Bays were two points up at half time, the writing was on the wall.

Their only hope lay in stopping the terrific drive Port developed from the centre wings.

Not only did they fail to check Thompson and Cahill, but Zucker took complete charge in ruck, Motley clearly won centre, and Luke and Boyd in attack left the Bay defence gasping.

Port sewed the game up in a six-goal burst without reply from Glenelg.

Herron at centre and Hill and Howard in attack gave the Bays plenty of chances in the first half, but Glenelg's attacks were generally static.

Although Port were struggling across half-

forward at this stage, they did keep the ball moving in attack.

Port's switch of Tierney to half-back paid off handsomely. He shut Hewett right out of the game and this had a tremendous effect.

The Bays seldom attacked with enough speed to catch Abley and Co. unawares.

Hill was their big hope. He played a fine first half, but Port's dominance was so marked after half-time that his opportunities were severely restricted in the last two quarters.

Apart from Dittmar's failure to get goals from chances galore, the feature of the second term was Glenelg's complete failure to check.

Twice from throwins close to Port's goal, Whe-

lan, standing down, was left unattended with a full view of the goal.

Glenelg's rovers Howard and Richens were more consistent in the first half, but after half-time Boyd was the best rover afield.

In his 12 years of league football I doubt if Dave has found the kicks coming as easily as they did in the second half today.

Glenelg made a belated effort to hold the brilliant Thompson by sending A. Linke to stand him in the last quarter, but the Port tide was at the flood.

Wholesale changes were an admission of defeat long before the final siren.

Richens battled on well, and Haydn Linke made a very impressive debut under severe pressure at half-back right in a side that was clearly outclassed.

Magpies far too good

The game is very simply summed up, says Jeff Pash. Port were far too strong in too many positions on the day.

Glenelg were in the game for as long as Port could not kick goals.

In the run home Glenelg did not have enough individual winners to build any firm attack.

Port established a strong grip on the sources of attack—the rucks and, most importantly in the early stages, the centreline—and were able to afford all manner of extravagant misses from set scoring positions.

Tactically speaking, there is nothing much to report. The wind, which Port won with the toss, could scarcely be reckoned in terms of goals; it was quite easy to work with it, provided you first won the ball.

Port too good

The Bays tried a number of changes in the last quarter, Hill to centre, A. Linke to the wing, Pemberton to centre half-forward, Herron to half-forward, Hewett to the goalsneak's position.

They did all they could to pack their attack, in fact. To no avail; Port were going too well.

All Port's changes were effective this week. The circumstances were, of

course, easier in the matter of weather and opposition. But at least all the newcomers did well.

Thompson at centre wing helped to win the important centreline victory; like Cahill, he made things easy for the forwards by kicking accurately as well as getting a lot of kicks in the first place.

Trevor Obst was an impressive dasher and stayer in the back pocket. Luke played strongly at half-forward right and Kelly thoroughly earned his ruck post.

Liked change

The placing of Tierney at half-back on Hewett was a shrewd and successful move; Hewett is certainly not himself at the moment, but he was not given much chance to recover today.

One must add that both Boyd and Whelan were vastly different propositions this week, and Gill appreciated the change to centre half-back.

The Bays' set fields in attack and defence did as well as could be expected in the circumstances; they tended to be not so often outplayed by their own opponents (though there was some of that) as starved in attack and over-run by the rucks in defence.

Haydn Linke played a promising game at half-back right.

Port's big men dominated the rucks and the field marking; they collaborated more effectively in the tight corners.

Port held a marking superiority generally and especially where it counted, near the goals; but they also delivered the ball much better to the same place.

No easy goals

Dittmar had a day of contrasts—leading brilliantly and absolutely at sea with his long drop-kicks. If he had kicked straight the match would have been all over bar the shouting at half-time.

Port's teamwork perhaps did not seem good on the day because the goals did not come easily; but there was any amount of strength and individual brilliance.

Motley and his centreline promise an interesting tussle with the brilliant West trio next week.

My best on the day would be Boyd for his constructive work on the ball and at half-forward. Zucker for an excellent rucking effort and Motley for a strong game at centre.



By Gil Langley

Port strong these ways

Rucks and centreline supremacy paved the Magpies' road to the grand final.

Never at any stage were these positions seriously challenged.

Although Glenelg battled strongly to keep in touch in the first half, their play after half-time appeared slack.

Port, sensing victory and with greater determination, were the side we knew.

Unchallenged in any department, this side annihilated the opposition.

Intelligent kicking to position made Glenelg look second rate.

Zucker's effort did much in the Port recovery. Always trying to get on

top, his efforts during Port's match-winning third quarter were outstanding, with sensible big knocks and taps to the rovers.

Zucker is a model to aspiring players.

It was hard to understand Glenelg's negative tactics in such a crucial game.

Attack is the essence of winning, and that's where they broke down.

Overall, Port were confident. Glenelg seemed nervous and mishandled badly. Many opportunities went begging as a result.

Well, Port and West are worthy contenders for this year's honor.

Final games are totally

different from home-and-home events.

Glenelg, I consider, played casually and paid the penalty. They showed lack of fighting spirit, especially after the long interval.

Experience is always helpful, but I thought the Bays showed little aptitude in the vigorous exchanges.

Everybody realised that Port had the game sewn up if they had kicked straight for goal.

Cahill and Dittmar marred their splendid performance by indifferent kicking.

the ball close to the ground.

★ ★
PORT'S Seconds celebrated their premiership win over North with a hotel dinner this evening. North had a social evening at Prospect Oval.

start of this season.

★ ★
BOB Powell, who played finely for Port in the Seconds' grand final had already been in one premiership team this season.

He played for Semaphore Centrals, who

won the Amateur League premiership.

★ ★
B. HILL, Glenelg's centre half-forward, was responsible for a brilliant falling mark in the second quarter.

Stretched right out at full length, he gathered

TOMORROW IT'S **MAGPIES** OR **TIGERS** FOR THE FINAL

Port defence gives them key to victory

Port look to have remedied the defects which allowed their defence to be slashed to ribbons last week for the preliminary final against Glenelg at Adelaide Oval tomorrow.

Glenelg, on the other hand, have a weakened defence caused by injuries. With attacking power of equal strength, this contrast in defences gives Port the balance of power to win.

For Glenelg to win, they would have to attack three times to Port's twice, and this looks a little beyond them.

Last time these sides met was at Glenelg on July 25.

With Motley well beaten at centre by Hewett, Glenelg came away first from centre equally as often as Port.

That day, Port had winning half-forwards in Luke and Obst and that did the trick.

Richens and Herron, who were the Bay rovers, repeatedly began Bay attacks, but did not play directly enough, and the half-forward flankers particularly were not up to the job.

To beat Port tomorrow, Glenelg must keep running, and cart the slower Port rucks off their feet.

Hannaford was the dominating ruck force for Port last time. He is out tomorrow. Branson could become best of the knock followers.

Williams is a danger

The Port rucks are not doing anything with the ball, even if they get first touch at the bounces. They are not directing it out, but pulling it down into a scrimmage more often than not.

When they do get it clear, very often it goes to an opposition rover.

In the field play, the Bay followers should be far too speedy, and if they can hold the important marks,

should have a big part in moulding the Bay's play-on game.

Richens and Tom Williams both played well in the last game. Williams kicked five goals — which should be a warning to Glenelg back pocket Chisholm.

Williams is more dangerous in the pocket than on the ball, where Richens should have the better of things throughout.

Richens is a very direct player, and lately has been putting the ball right down the middle from the bounces.

Herron has speed, vigor

The fate of the game is probably tied up in the centre line.

With their rucks held, Port must get an even share across centre. Motley will outreach Herron, and will kick as deeply into the forwards.

Herron does not handle the high-leaping centres well. His speed and vigor on the ground will force him to spoil, but to do that he must play close.

If Herron cannot handle Motley, the obvious switch will be Hewett to centre.

On the wings, Fraser and Dickinson could be shaded by Thompson and Cahill.

They don't check closely

When he was Port's regular wingman, Thompson always played on the right wing, and too often he drove the ball along the boundary or out of bounds. Now he is on the left wing, and should turn on his natural foot into the play.

Fraser is a clever ground player, but not so determined as Thompson. Neither Dickinson nor Cahill are likely to close-check, and should both get many kicks.

Demons favorites for VFL title

MELBOURNE, Today: Melbourne, in every grand final since 1954, should win the 1959 league football premiership by beating Essendon tomorrow.

Both sides can turn on pace, but Melbourne's teamwork is better under pressure, they are more experienced and physically stronger, and they have a decided advantage in playing on their own ground.

Melbourne, too, are more even than Essendon, and it is evenness rather than brilliance that wins premierships.

Last week, across half-back, Port were too loose and too slow. Gill and Tierney give them more speed, which will be needed against Hill and Hewett.

It fit, Hewett will beat Tierney, but the Hill-Gill duel should be very even. Gill is likely to get a lot of kicks, but Hill's ability to drive long and accurately could make him a dangerous player with only half a dozen kicks.

Port centre half-forward, Obst, is in the same category as Hill. His opponent, Butler, must concede Obst height and strong marking. Butler sticks very closely and is vigorous.

On the half-forward flanks Port look better, with clever, fast players in Luke and Boyd, opposed by the Linke brothers, Ambrose and Haydn.

His first league game

The Linke brothers are as alike as peas in a pod in their styles. They could pass for twins—they kick, run, and mark in exactly the same way.

But it is asking a lot for a player in his first league game to hold Boyd, as Haydn Linke will have to do. Further, Ambrose gets many kicks, but is inclined to be loose.

Of the full forwards, Dittmar looks more likely to get goals against Kev Abley than does Pemberton against John Abley.

Both full backs will have to spoil hard.

Big help to rovers

Dittmar is not a good ground player, and is off-suited if the ball is punched away. Pemberton, though not strong on the ground does better when spoiled, as he blocks strongly for his rovers.

He has handed his rovers almost as many goals this year as he has kicked himself.

The fast leader worries John Abley these days. He can handle the goalsquare kicks well enough.

Through the day, I expect both sides to come away from centre in turn, but because Port's attack looks better able to make use of their opportunities, they should win.

PORT ARE FAVORITES

Port will go into the preliminary final against Glenelg tomorrow as odds-on favorites according to The News and The Sunday Mail football writers. They are tipped to win by Lawrie Jervis, Doug Steele, Fos Williams, Jack Oatey, Jeff Pash, Clayton Thompson, Vic Johnson, Sam Gallagher, and Gil Langley.

HOW TEAMS LINE UP

GLENELG—PORT Preliminary finals

(Glenelg kicking up, names underneath)

J. Abley
(28, 6.1, 13 0)

Pemberton
(36, 6.3½, 15 7)

T. Obst
(19, 5.8, 12 10)

Howard
(22, 5.8, 12 3)

Whelan
(29, 6.2½, 14 10)

Cutten
(22, 6.2, 12 12)

Tierney
(24, 5.10, 11 2)

Hewett
(24, 5.11, 12 7)

Cahill
(19, 5.10, 11 12)

Dickinson
(24, 5.10, 12 0)

Luke
(22, 6.2, 12 4)

A. Linke
(21, 5.11, 13 5)

Gill
(21, 6.1, 13 6)

Hill
(21, 6.2, 12 12)

Motley
(24, 5.10½, 13 4)

Herron
(24, 5.8, 12 2)

P. Obst
(23, 6.1½, 12 5)

Butler
(24, 5.10, 12 7)

Hayes
(24, 5.11, 12 4)

Leahy
(26, 5.11, 12 3)

Thompson
(22, 5.9, 11 10)

Fraser
(23, 5.6, 11 9)

Boyd
(30, 5.10½, 12 5)

H. Linke
(19, 5.10½, 12 6)

Potter
(17, 5.8, 12 0)

Chisholm
(23, 5.8, 12 0)

Tull
(25, 6.5, 14 8)

Nugent
(22, 6.1½, 13 0)

Dittmar
(25, 5.11, 13 8)

K. Abley
(24, 5.11½, 13 7)

Rucks.—Glenelg: Webber (20, 6.0½, 14 0), Branson (23, 6.4, 14 7), Richens (19, 5.7, 12 9), Cutten, Nugent, Howard. Port: Zucker (30, 6.3½, 14 7), Kelly (19, 6.2, 13 10), Williams (23, 5.7, 11 4), Whelan, Tull, Potter.

Reserves.—Glenelg: Kernahan (23, 6.2½, 13 6), Beal (19, 5.7, 10 4), Robinson, Alexander. Port: Mahney (19, 5.9, 11 5), Marrett (22, 6.3, 13 12).

Umpire.—J. L. Sweeney.